

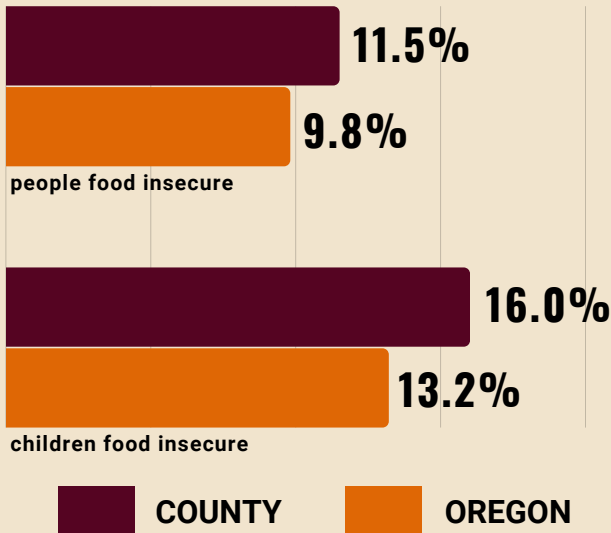
2023

STATUS OF HUNGER IN MULTNOMAH COUNTY

The data on this fact sheet reflect 2022 figures.

TOTAL COUNTY POPULATION:
810,011

GENERAL HUNGER STATISTICS



32%
people reporting food
insecurity who do not
qualify for federal
nutrition assistance,
county

28%
children in food insecure
households who do not
qualify for federal
nutrition assistance,
county

25%
people reporting food
insecurity who do not
qualify for federal
nutrition assistance,
statewide

20%
children in food insecure
households who do not
qualify for federal
nutrition assistance,
statewide

Hunger and food insecurity by race/ethnicity, statewide

3.8%	11.8%	13.0%	2.1%	9.5%
10.6%	24.9%	21.7%	7.2%	19.0%
White	Black	Native American	Asian and Pacific Islander	Hispanic

Hunger and food insecurity by household type, statewide

0.0%	1.0%	15.0%	6.0%	6.6%
5.1%	2.6%	27.5%	14.9%	15.1%
Couples with children	Couples without children	Single mothers	Women, alone	Men, alone

Hunger and food insecurity by housing status, statewide

8.2%	1.4%
20.6%	4.4%
Renters	Owners

HUNGER (dark purple) **FOOD INSECURITY** (orange)

SUPPLEMENTAL NUTRITION ASSISTANCE PROGRAM

136,671
average monthly
SNAP participants,
county

81,873
estimated income eligible
people not participating in
SNAP, county

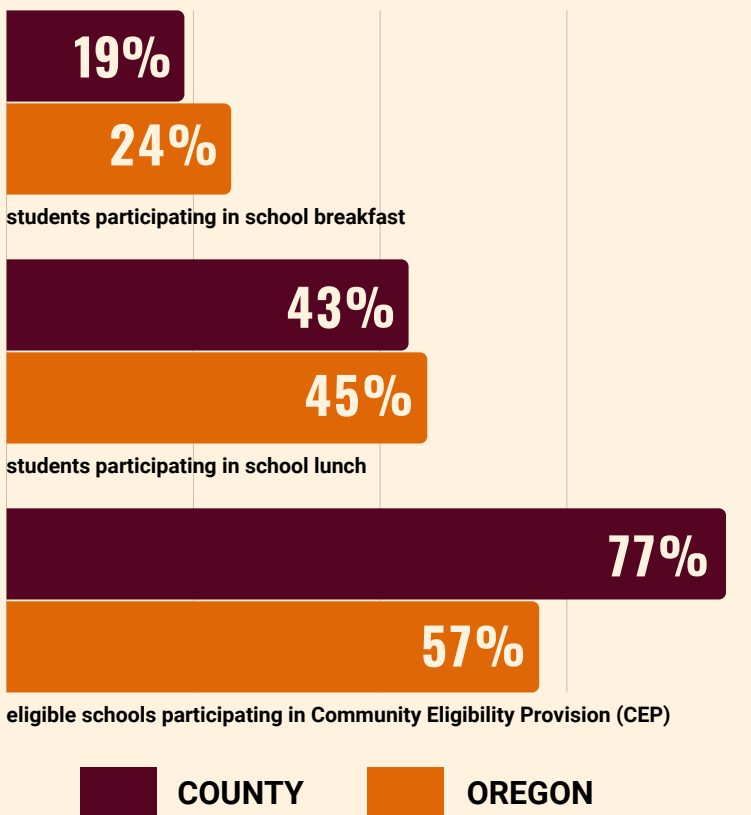
\$73,342,556
current annual value of
SNAP participation,
county

750,294
average monthly
SNAP participants,
statewide

433,077
estimated income eligible
people not participating in
SNAP, statewide

\$400,881,035
current annual value of
SNAP participation,
statewide

SCHOOL MEALS



MULTNOMAH COUNTY

45%

students with Free and Reduced Price meal eligibility, county

46%

students with Free and Reduced Price meal eligibility, statewide

39%

schools required to serve Breakfast after the Bell beginning SY23-24, county

32%

schools required to serve Breakfast after the Bell beginning SY23-24, statewide

SUMMER MEALS

15,815

Average daily summer meals participation, county

90,762

Student enrollment, county

77,202

Average daily summer meals participation, statewide

574,452

Student enrollment, statewide

WOMEN, INFANTS, AND CHILDREN

25%

% all pregnant people served by WIC, county

28%

% all pregnant people served by WIC, statewide

ABOUT THE OREGON HUNGER TASK FORCE

The Oregon Hunger Task Force was created by the State Legislature to act as a resource within government and as a statewide advocate for Oregonians who are hungry or at risk of hunger. Made up of legislators, state agency representatives, and nonprofit and community leaders, the Oregon Hunger Task Force works collaboratively with stakeholders throughout Oregon to: research, document, and raise awareness about the extent of hunger in Oregon, coordinate the provision of food and nutrition services across the state, and make recommendations for government action for the alleviation of hunger. To see all 36 Oregon Hunger Task Force county fact sheets and read about our methodology, visit www.oregonhungertaskforce.org/county-fact-sheets