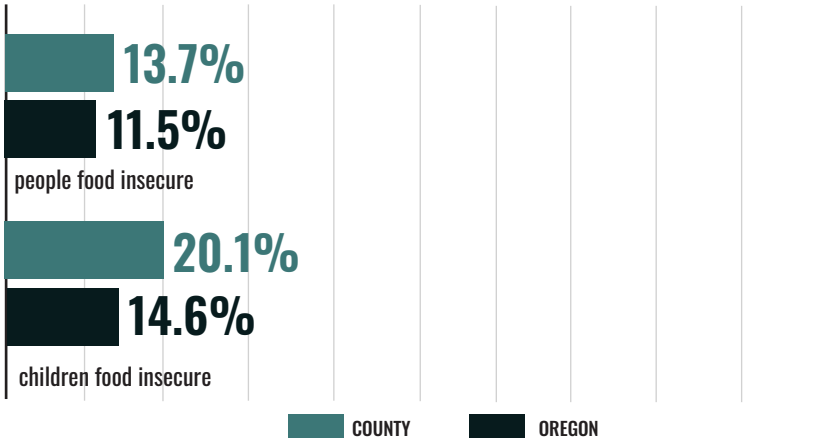


# 2021 STATUS OF HUNGER IN WALLOWA COUNTY

The data on this fact sheet reflect 2019 figures.

TOTAL COUNTY POPULATION: 7,160

## GENERAL HUNGER STATISTICS



35%

people reporting food insecurity who do not qualify for federal nutrition assistance, Wallowa County

31%

children in food insecure households who do not qualify for federal nutrition assistance, Wallowa County

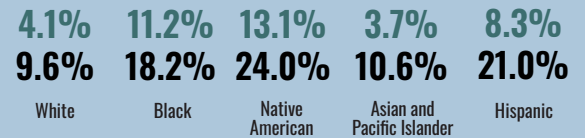
40%

people reporting food insecurity who do not qualify for federal nutrition assistance, statewide

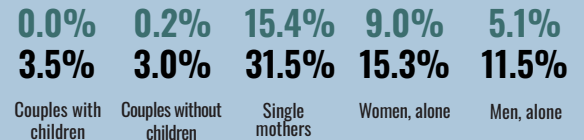
36%

children in food insecure households who do not qualify for federal nutrition assistance, statewide

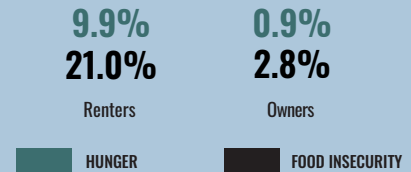
### Hunger and Food Insecurity by Race/Ethnicity, statewide



### Hunger and Food Insecurity by household type, statewide



### Hunger and Food Insecurity by housing status, statewide

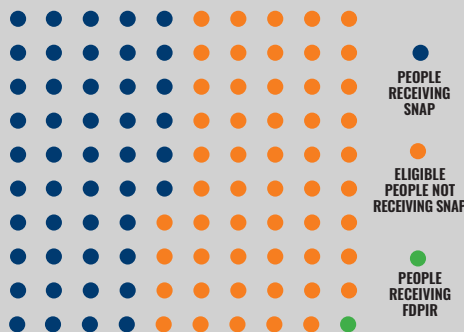


## SUPPLEMENTAL NUTRITION ASSISTANCE PROGRAM

### PROGRAM ACCESS INDEX (PAI)\*

This indicator estimates SNAP utilization in this county. It is a ratio comparing people participating in SNAP with all income-eligible people. In some counties, time limits may cause a participation gap. These kick some individuals off SNAP after three months even if they are income-eligible.

Out of an average population of 100 people in this county, this visualization represents: those who are participating in SNAP, eligible for SNAP but not participating, and receiving the Food Distribution Program on Indian Reservations (FDPIR).



955

average monthly SNAP participants, Wallowa County

421,114

estimated income eligible people not participating in SNAP, statewide

\$1,534,652

estimated annual value of increasing SNAP participation, Wallowa County

\$621,270,345

estimated annual value of increasing SNAP participation, statewide

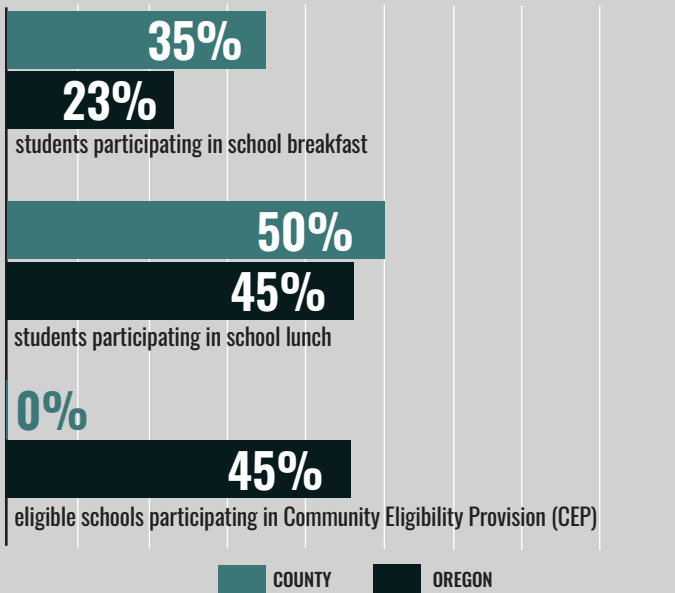
**.46**  
PAI for all people, Wallowa County

**.29**  
PAI for people over 65, Wallowa County

**.56**  
PAI for all children, Wallowa County

\* Figures capped at 1.00. See study methodology for further information.

## SCHOOL MEALS



**41%**

students with Free and Reduced Price meal eligibility, Wallowa County

**50%**

students with Free and Reduced Price meal eligibility, statewide

**50%**

schools serving Breakfast after the Bell, Wallowa County

**10%**

schools serving Breakfast after the Bell, statewide

## SUMMER MEALS

**7.9%**

Students participating in summer meals compared to students participating in school lunch, Wallowa County

**27.7%**

Students participating in summer meals compared to students participating in school lunch, statewide

**-2.5%**

Summer Meal participation percent change from 2018 to 2019, statewide

## WOMEN, INFANTS AND CHILDREN

**INFO NOT AVAILABLE**

% all pregnant people served by WIC, Wallowa County

**27%**

% all pregnant people served by WIC, statewide

## ABOUT THE OREGON HUNGER TASK FORCE

The Oregon Hunger Task Force was created by the State Legislature to act as a resource within government and as a statewide advocate for Oregonians who are hungry or at risk of hunger. Made up of legislators, state agency representatives, and nonprofit and community leaders, the Oregon Hunger Task Force works collaboratively with stakeholders throughout Oregon to: research, document, and raise awareness about the extent of hunger in Oregon, coordinate the provision of food and nutrition services across the state, and make recommendations for government action for the alleviation of hunger.

To see all 36 Oregon Hunger Task Force county fact sheets and read about our methodology, visit [www.oregonhungertaskforce.org/county-fact-sheets](http://www.oregonhungertaskforce.org/county-fact-sheets)