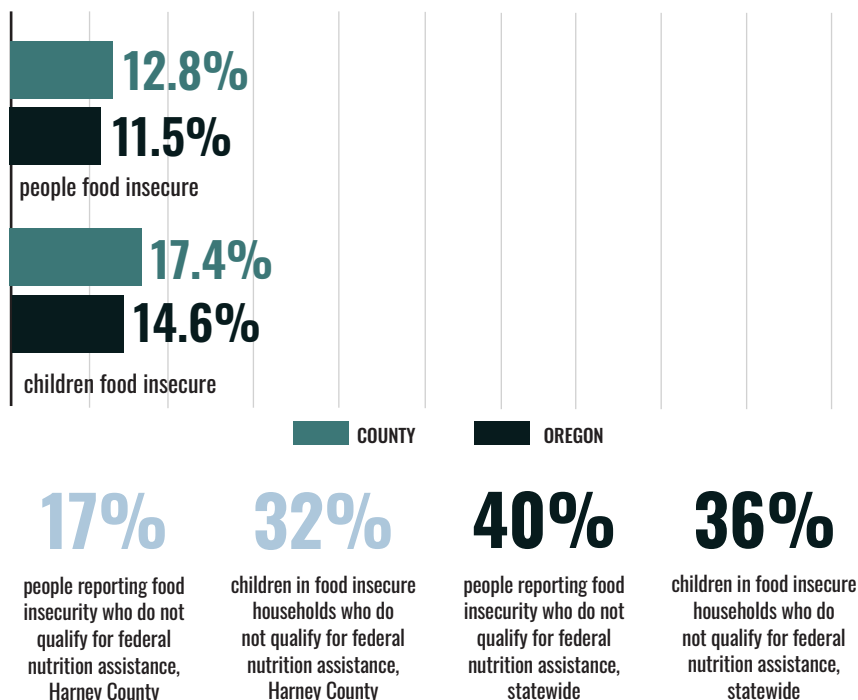


# 2021 STATUS OF HUNGER IN HARNEY COUNTY

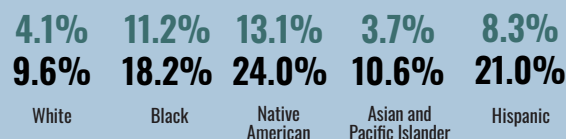
The data on this fact sheet reflect 2019 figures.

**TOTAL COUNTY POPULATION: 7,280**

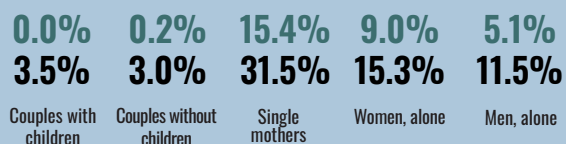
## GENERAL HUNGER STATISTICS



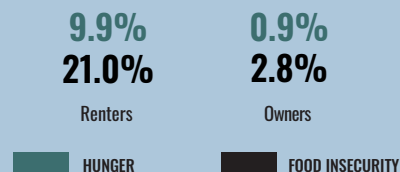
### Hunger and Food Insecurity by Race/Ethnicity, statewide



### Hunger and Food Insecurity by household type, statewide



### Hunger and Food Insecurity by housing status, statewide

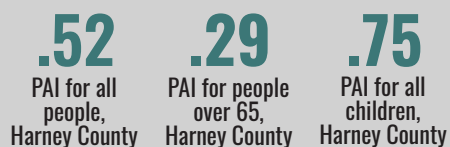
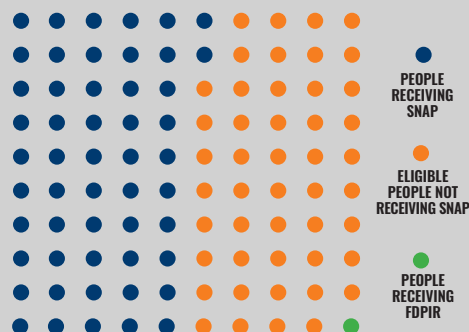


## SUPPLEMENTAL NUTRITION ASSISTANCE PROGRAM

### PROGRAM ACCESS INDEX (PAI)\*

This indicator estimates SNAP utilization in this county. It is a ratio comparing people participating in SNAP with all income-eligible people. In some counties, time limits may cause a participation gap. These kick some individuals off SNAP after three months even if they are income-eligible.

Out of an average population of 100 people in this county, this visualization represents: those who are participating in SNAP, eligible for SNAP but not participating, and receiving the Food Distribution Program on Indian Reservations (FDPIR).



**1,297**

average monthly SNAP participants, Harney County

**\$1,611,964**

estimated annual value of increasing SNAP participation, Harney County

**421,114**

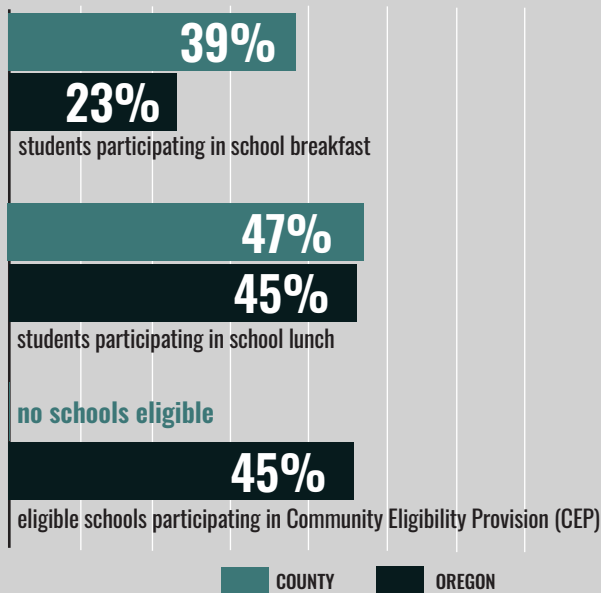
estimated income eligible people not participating in SNAP, statewide

**\$621,270,345**

estimated annual value of increasing SNAP participation, statewide

\* Figures capped at 1.00. See study methodology for further information.

## SCHOOL MEALS



**51%**

students with Free and Reduced Price meal eligibility, Harney County

**50%**

students with Free and Reduced Price meal eligibility, statewide

**20%**

schools serving Breakfast after the Bell, Harney County

**10%**

schools serving Breakfast after the Bell, statewide

## SUMMER MEALS

**32.6%**

Students participating in summer meals compared to students participating in school lunch, Harney County

**27.7%**

Students participating in summer meals compared to students participating in school lunch, statewide

**-2.5%**

Summer Meal participation percent change from 2018 to 2019, statewide

## WOMEN, INFANTS AND CHILDREN

**35%**

% all pregnant people served by WIC, Harney County

**27%**

% all pregnant people served by WIC, statewide

## ABOUT THE OREGON HUNGER TASK FORCE

The Oregon Hunger Task Force was created by the State Legislature to act as a resource within government and as a statewide advocate for Oregonians who are hungry or at risk of hunger. Made up of legislators, state agency representatives, and nonprofit and community leaders, the Oregon Hunger Task Force works collaboratively with stakeholders throughout Oregon to: research, document, and raise awareness about the extent of hunger in Oregon, coordinate the provision of food and nutrition services across the state, and make recommendations for government action for the alleviation of hunger.

To see all 36 Oregon Hunger Task Force county fact sheets and read about our methodology, visit [www.oregonhungertaskforce.org/county-fact-sheets](http://www.oregonhungertaskforce.org/county-fact-sheets)