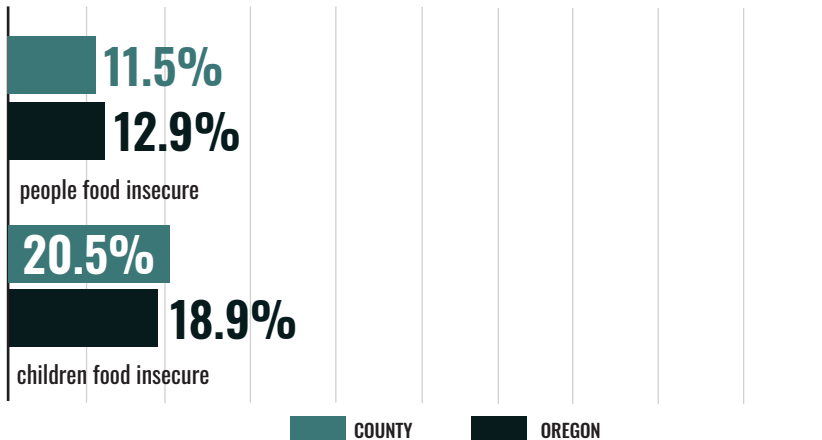


# 2019 STATUS OF HUNGER IN UMATILLA COUNTY

The data on this fact sheet reflect 2017 figures.

**TOTAL COUNTY POPULATION: 76,736**

## GENERAL HUNGER STATISTICS



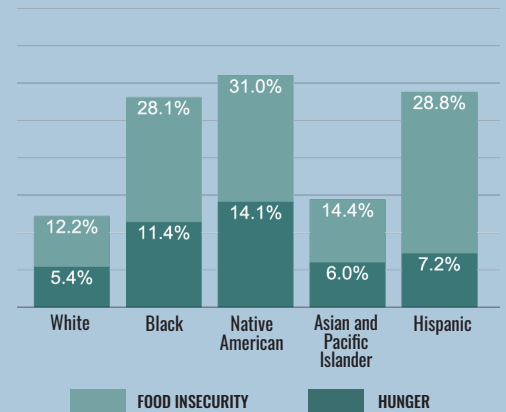
**15.2%**

people reporting food insecurity who do not qualify for federal nutrition assistance, Umatilla County

**23%**

children in food insecure households who do not qualify for federal nutrition assistance, Umatilla County

## Hunger and Food Insecurity by Race/Ethnicity, statewide



**32%**

people reporting food insecurity who do not qualify for federal nutrition assistance, statewide

**37%**

children in food insecure households who do not qualify for federal nutrition assistance, statewide

## SUPPLEMENTAL NUTRITION ASSISTANCE PROGRAM

### PROGRAM ACCESS INDEX (PAI)\*

This indicator estimates SNAP utilization in this county. It is a ratio comparing people participating in SNAP with all income-eligible people. In some counties, time limits may cause a participation gap. These kick some individuals off SNAP after three months even if they are income-eligible.

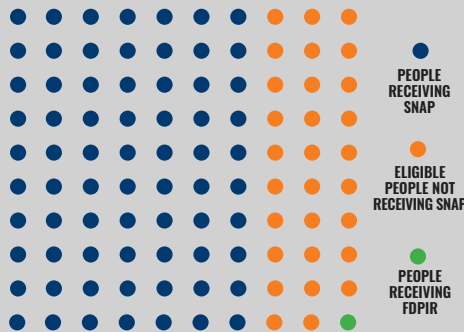
Out of an average population of 100 people in this county, this visualization represents: those who are participating in SNAP, eligible for SNAP but not participating, and receiving the Food Distribution Program on Indian Reservations (FDPIR).

**14,942**

average monthly SNAP participants, Umatilla County

**227,279**

estimated income eligible people not participating in SNAP, statewide



**\$21,376,537**

annual value of SNAP benefits, Umatilla County

**\$339,872,781**

estimated annual value of increasing SNAP participation, statewide

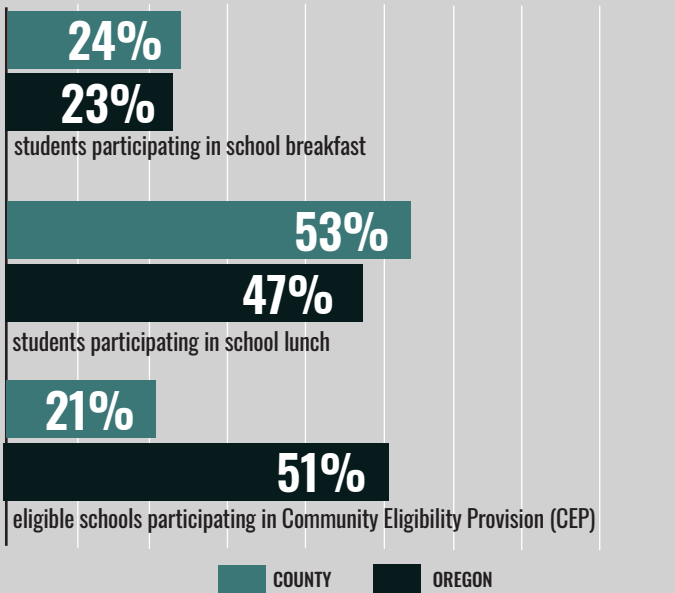
Time limits on SNAP are **not** in place for Able-Bodied Adults without Dependents in Umatilla County, 2017

**3** counties in Oregon in 2017 have time limits for Able-Bodied Adults without Dependents and time limits are enforced in areas where **44%** of Oregonians live.

**.70** PAI for all people, Umatilla County  
**.33** PAI for people over 65, Umatilla County  
**.81** PAI for all children, Umatilla County

\* Figures capped at 1.00. See study methodology for further information.

## SCHOOL MEALS



**61%**

students with Free and Reduced Price meal eligibility, Umatilla County

**52%**

students with Free and Reduced Price meal eligibility, statewide

**6%**

schools serving Breakfast after the Bell, Umatilla County

**12%**

schools serving Breakfast after the Bell, statewide

## SUMMER MEALS

**1,242**

average number of children eating summer meals daily, Umatilla County

**41,740**

average number of children eating summer meals daily, statewide

**15%**

Students participating in summer meals compared to students participating in school lunch, Umatilla County

**15%**

Students participating in summer meals compared to students participating in school lunch, statewide

## WOMEN, INFANTS AND CHILDREN

**75%**

Medicaid births on WIC, Umatilla County

**67.8%**

Medicaid births on WIC, statewide

## ABOUT THE OREGON HUNGER TASK FORCE

The Oregon Hunger Task Force was created by the State Legislature to act as a resource within government and as a statewide advocate for Oregonians who are hungry or at risk of hunger. Made up of legislators, state agency representatives, and nonprofit and community leaders, the Oregon Hunger Task Force works collaboratively with stakeholders throughout Oregon to: research, document, and raise awareness about the extent of hunger in Oregon, coordinate the provision of food and nutrition services across the state, and make recommendations for government action for the alleviation of hunger.

To see all 36 Oregon Hunger Task Force county fact sheets and read about our methodology, visit [www.oregonhungertaskforce.org/county-fact-sheets](http://www.oregonhungertaskforce.org/county-fact-sheets)