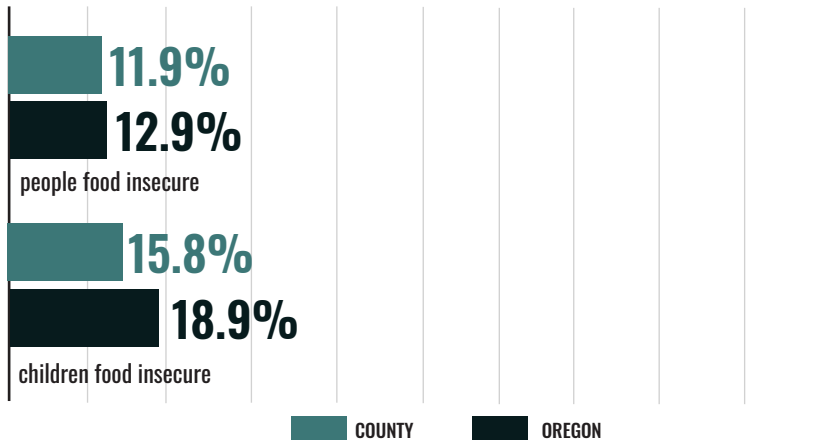


# 2019 STATUS OF HUNGER IN GILLIAM COUNTY

The data on this fact sheet reflect 2017 figures.

**TOTAL COUNTY POPULATION: 1,910**

## GENERAL HUNGER STATISTICS



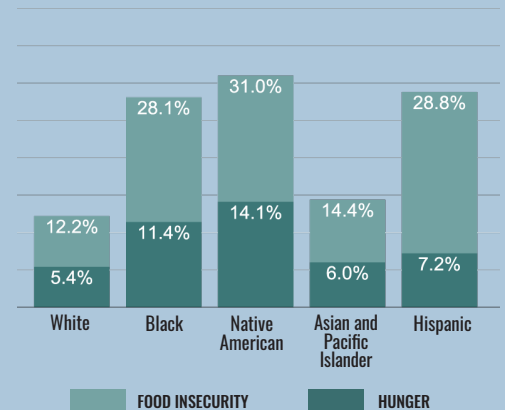
**22.0%**

people reporting food insecurity who do not qualify for federal nutrition assistance, Gilliam County

**26%**

children in food insecure households who do not qualify for federal nutrition assistance, Gilliam County

## Hunger and Food Insecurity by Race/Ethnicity, statewide



**32%**

people reporting food insecurity who do not qualify for federal nutrition assistance, statewide

**37%**

children in food insecure households who do not qualify for federal nutrition assistance, statewide

## SUPPLEMENTAL NUTRITION ASSISTANCE PROGRAM

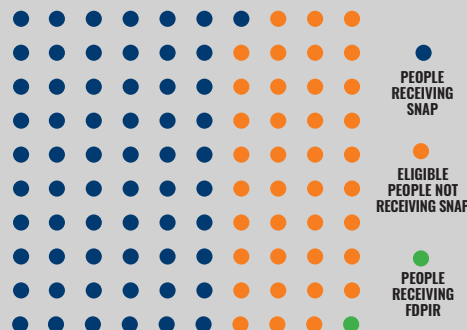
### PROGRAM ACCESS INDEX (PAI)\*

This indicator estimates SNAP utilization in this county. It is a ratio comparing people participating in SNAP with all income-eligible people. In some counties, time limits may cause a participation gap. These kick some individuals off SNAP after three months even if they are income-eligible.

Out of an average population of 100 people in this county, this visualization represents: those who are participating in SNAP, eligible for SNAP but not participating, and receiving the Food Distribution Program on Indian Reservations (FDPIR).

**273**

average monthly SNAP participants, Gilliam County



**\$386,021**

annual value of SNAP benefits, Gilliam County

Time limits on SNAP are **not** in place for Able-Bodied Adults without Dependents in Gilliam County, 2017

**.61**

PAI for all people, Gilliam County

**.36**

PAI for people over 65, Gilliam County

**.81**

PAI for all children, Gilliam County

\* Figures capped at 1.00. See study methodology for further information.

**227,279**

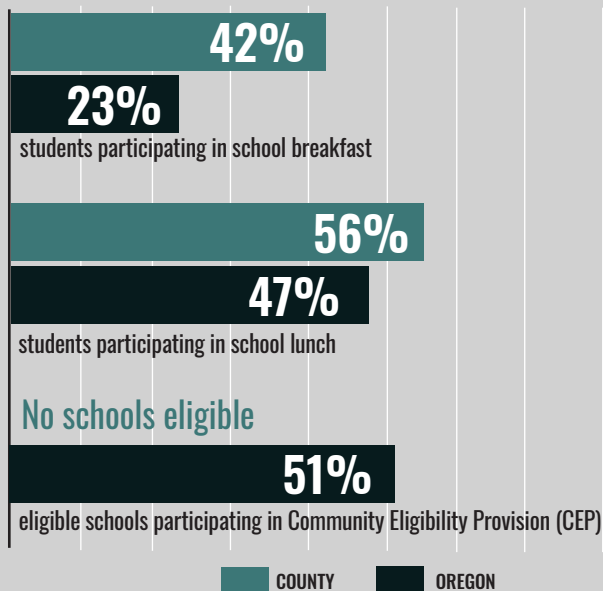
estimated income eligible people not participating in SNAP, statewide

**\$339,872,781**

estimated annual value of increasing SNAP participation, statewide

**3** counties in Oregon in 2017 have time limits for Able-Bodied Adults without Dependents and time limits are enforced in areas where **44%** of Oregonians live.

## SCHOOL MEALS



**54%**

students with Free and Reduced Price meal eligibility, Gilliam County

**52%**

students with Free and Reduced Price meal eligibility, statewide

**33%**

schools serving Breakfast after the Bell, Gilliam County

**12%**

schools serving Breakfast after the Bell, statewide

## SUMMER MEALS

**24**

average number of children eating summer meals daily, Gilliam County

**41,740**

average number of children eating summer meals daily, statewide

**14%**

Students participating in summer meals compared to students participating in school lunch, Gilliam County

**15%**

Students participating in summer meals compared to students participating in school lunch, statewide

## WOMEN, INFANTS AND CHILDREN

**20%**

Medicaid births on WIC, Gilliam County

**67.8%**

Medicaid births on WIC, statewide

## ABOUT THE OREGON HUNGER TASK FORCE

The Oregon Hunger Task Force was created by the State Legislature to act as a resource within government and as a statewide advocate for Oregonians who are hungry or at risk of hunger. Made up of legislators, state agency representatives, and nonprofit and community leaders, the Oregon Hunger Task Force works collaboratively with stakeholders throughout Oregon to: research, document, and raise awareness about the extent of hunger in Oregon, coordinate the provision of food and nutrition services across the state, and make recommendations for government action for the alleviation of hunger.

To see all 36 Oregon Hunger Task Force county fact sheets and read about our methodology, visit [www.oregonhungertaskforce.org/county-fact-sheets](http://www.oregonhungertaskforce.org/county-fact-sheets)