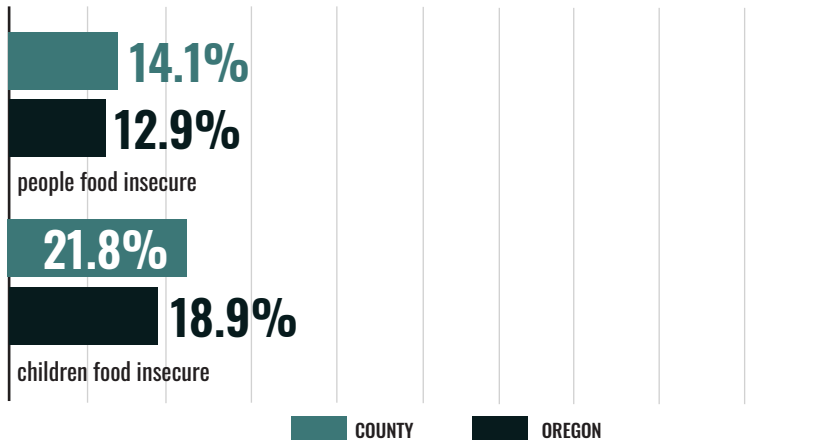


2019 STATUS OF HUNGER IN CURRY COUNTY

The data on this fact sheet reflect 2017 figures.

TOTAL COUNTY POPULATION: 22,377

GENERAL HUNGER STATISTICS



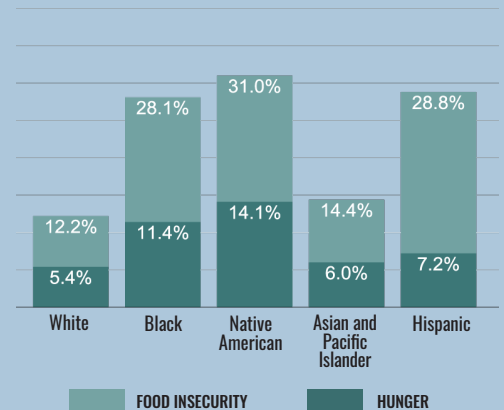
20.8%

people reporting food insecurity who do not qualify for federal nutrition assistance, Curry County

27%

children in food insecure households who do not qualify for federal nutrition assistance, Curry County

Hunger and Food Insecurity by Race/Ethnicity, statewide



32%

people reporting food insecurity who do not qualify for federal nutrition assistance, statewide

37%

children in food insecure households who do not qualify for federal nutrition assistance, statewide

SUPPLEMENTAL NUTRITION ASSISTANCE PROGRAM

PROGRAM ACCESS INDEX (PAI)*

This indicator estimates SNAP utilization in this county. It is a ratio comparing people participating in SNAP with all income-eligible people. In some counties, time limits may cause a participation gap. These kick some individuals off SNAP after three months even if they are income-eligible.

Out of an average population of 100 people in this county, this visualization represents: those who are participating in SNAP, eligible for SNAP but not participating, and receiving the Food Distribution Program on Indian Reservations (FDPIR).

4,574

average monthly SNAP participants, Curry County

\$6,615,982

annual value of SNAP benefits, Curry County

Time limits on SNAP are **not** in place for Able-Bodied Adults without Dependents in Curry County, 2017

* Figures capped at 1.00. See study methodology for further information.



.75

PAI for all people, Curry County

.45

PAI for people over 65, Curry County

.92

PAI for all children, Curry County

227,279

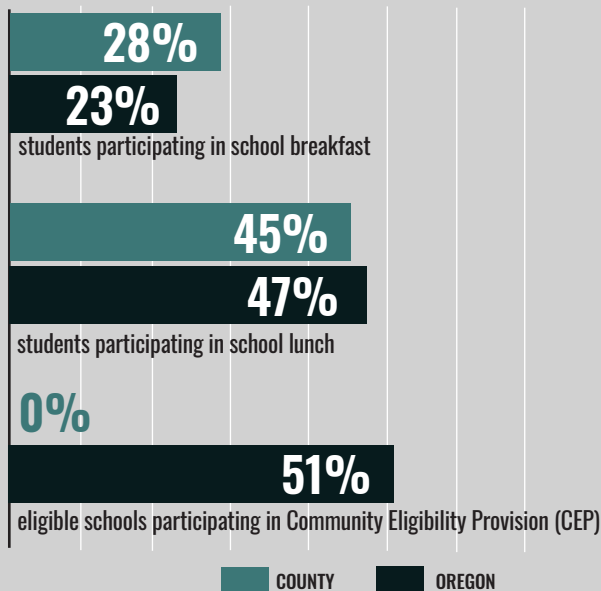
estimated income eligible people not participating in SNAP, statewide

\$339,872,781

estimated annual value of increasing SNAP participation, statewide

3 counties in Oregon in 2017 have time limits for Able-Bodied Adults without Dependents and time limits are enforced in areas where **44%** of Oregonians live.

SCHOOL MEALS



55%
students with Free
and Reduced Price
meal eligibility, Curry
County

52%
students with Free
and Reduced Price
meal eligibility,
statewide

0%
schools serving
Breakfast after the
Bell, Curry County

12%
schools serving
Breakfast after the
Bell, statewide

SUMMER MEALS

110
average number of children
eating summer meals daily,
Curry County

41,740
average number of children
eating summer meals daily,
statewide

10%
Students participating in summer
meals compared to students
participating in school lunch,
Curry County

15%
Students participating in
summer meals compared to
students participating in school
lunch, statewide

WOMEN, INFANTS AND CHILDREN

62% Medicaid births on
WIC, Curry County

67.8% Medicaid births on
WIC, statewide

ABOUT THE OREGON HUNGER TASK FORCE

The Oregon Hunger Task Force was created by the State Legislature to act as a resource within government and as a statewide advocate for Oregonians who are hungry or at risk of hunger. Made up of legislators, state agency representatives, and nonprofit and community leaders, the Oregon Hunger Task Force works collaboratively with stakeholders throughout Oregon to: research, document, and raise awareness about the extent of hunger in Oregon, coordinate the provision of food and nutrition services across the state, and make recommendations for government action for the alleviation of hunger.

To see all 36 Oregon Hunger Task Force county fact sheets and read about our methodology, visit
www.oregonhungertaskforce.org/county-fact-sheets